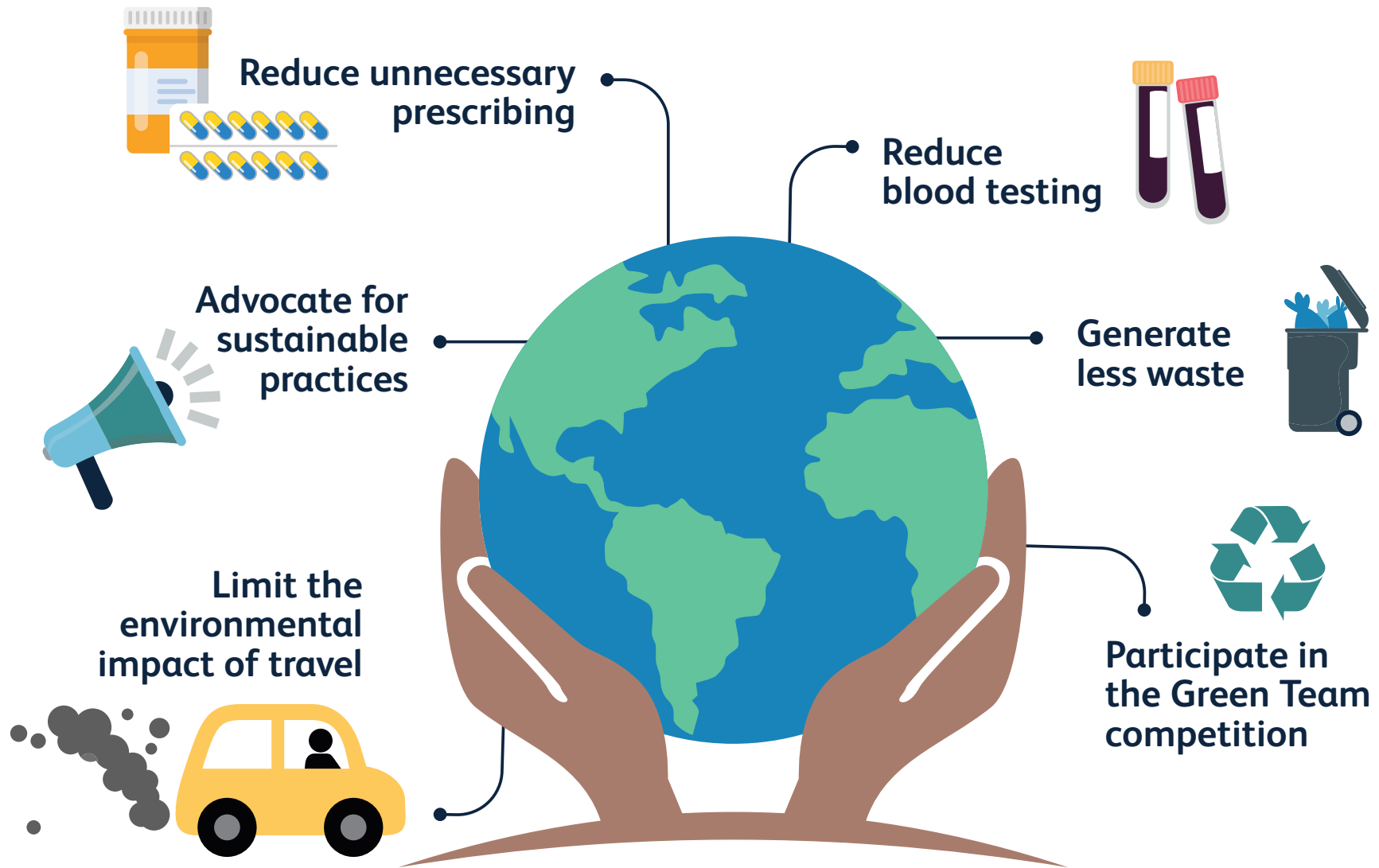


Infographic 1: Actions to reduce the environmental impact of healthcare delivery



Infographic 2: Actions to respond to the health effects of climate change

Climate change means heatwaves are becoming more frequent. Here's how heat can affect your health or how your medication can make you more vulnerable to heat.

When cars burn petrol, they emit toxic air pollutants which can exacerbate asthma. Remember to carry an inhaler and avoid busy roads where possible.



Communicating with patients about climate change



Adopt key adaptation strategies